

# CARTO Screed 5mm

## THE BEST IN WATERPROOF MEMBRANE PROTECTION **Protection Boards**



### **Strength**

CARTOSCREED boards are especially puncture & injury resistant, rot and root proof. They are engineered to resist puncture in excess of 1900 newton (BS EN ISO 12236:2006). This degree is not attained by most other protection boards of same category.

### **Specification**

A 1m x 2m x 5mm thick, semi flexible, polypropylene based board, double layered with 5mm integrated perpendicular support spacers at 4mm intervals, to be applied as a protection to the waterproof membrane.

### **Resistance to Chemicals**

CARTOSCREED boards are not affected by mineral oils, solvents, acids, bases, and salts that are usually found in contaminated water tables and in soil components. CARTOSCREED boards do not absorb water which adds to the impermeability of the waterproof membrane. CARTOSCREED boards do not rust, rot, corrode, or support bacterial growth.

### **Flexibility**

Quick & easy installation

- Time saver
- Absorb shocks
- Does not crack under extreme pressure of building structure



## CARTO Screed 5mm

### THE BEST IN WATERPROOF MEMBRANE PROTECTION

## METHODS OF APPLICATION

### On Hot Applied Asphalt Liquid Membrane

CARTOSCREED boards are simply laid down on top of hot asphalt before it cools down.

### On Torched Applied Asphalt Membrane

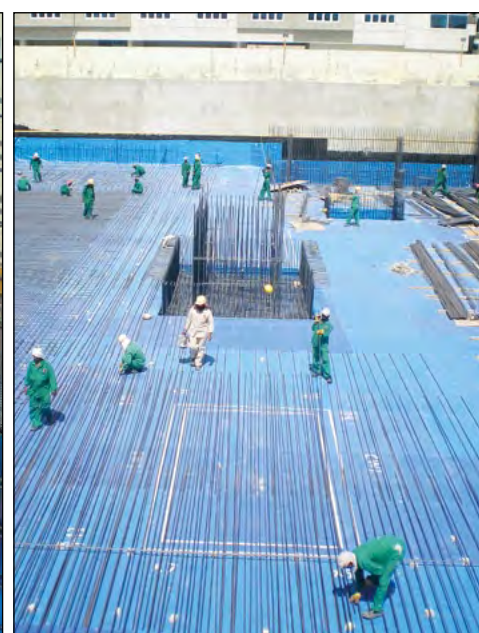
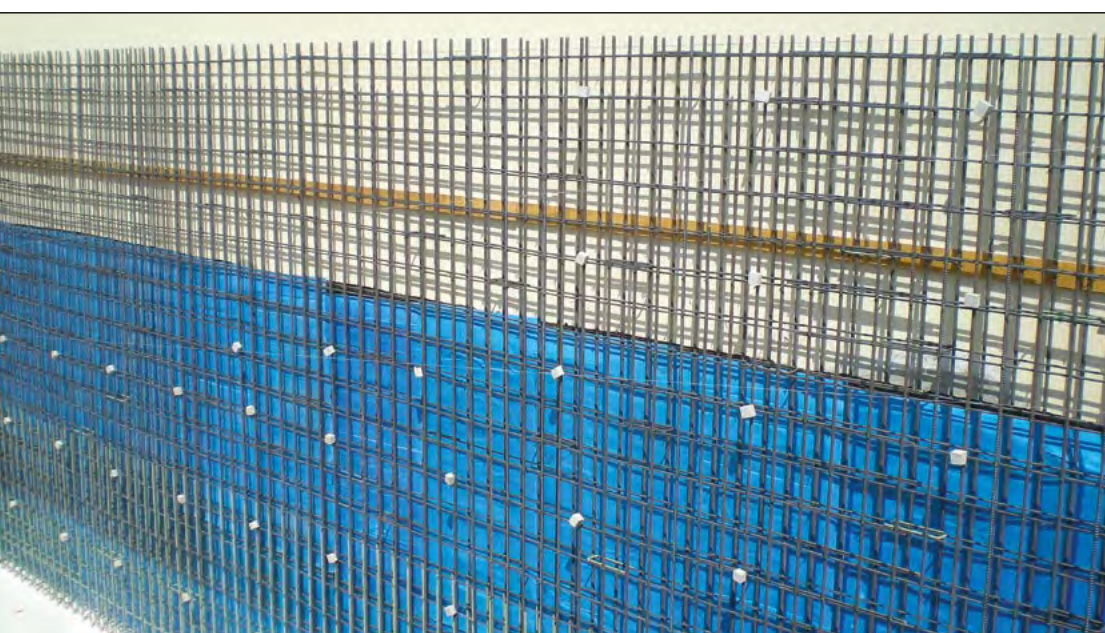
The exposed side of the membrane should be lightly torched in separate spots. When the top exposed layer of the membrane changes into a sticky shiny layer, CARTOSCREED protection board is applied on to it by gentle pressure. A minimum overlap of 3 to 5cm is recommended.

### On Rubber Based Waterproof Membrane

A solvent based glue (patex or similar) is to be applied as an adhering agent between the waterproof membrane and the protection board.

### Technical Data

Material	polypropylene
Size	1mx2m
Approximate weight	800gm/sq.m
Thickness	aprox.5mm
Water absorption (ASTM 1004)	nil
Resistance to 60% NaOH (ASTM D 543)	not affected
Resistance to 30% NaOH (ASTM D 543)	not affected
Resistance to 30% H2SO4 (ASTM D 543)	not affected
Resistance to 10% HCl (ASTM D 543)	not affected
Resistance to mineral oils (ASTM)	not affected
Linear dimensioning change due to accelerated aging (ASTM D 1204)	nil
Resistance to puncture (BS EN ISO 12236:2006)	≥ 1900 newton
Compressive strength	≥ 3.8Kg/sq.cm



### Sustainable Material

- LEEDS-Credit 4 - Material & Response "MR" - Post Industrial Material potential 1 Point.
- All CARTONAL products are made of inert plastic material. • Our products are 100% recyclable.
- Our electricity generation technology is rated EPA tier 2 and EU Stage 2 exhaust emission level.